

Third module: Bibliometrics and academic publishing

Introduction to bibliometrics. Academic publishing - *Cristina Vettore*

Padua Research Archive (PRA): the institutional repository for academic research - *Michela Zorzi*

- Delibera del Senato Accademico del 9/11/2004 (Adesione alla [Dichiarazione di Messina](#))
- Regolamento di Ateneo in materia di scuole di dottorato di ricerca ([D.R. 3325 del 07/12/2012](#))
- Regolamento per i corsi di dottorato di ricerca ([D.R. 644 del 03/03/2017](#))
- [Policy sull'accesso aperto](#) (Open access) alla letteratura scientifica - Senato Accademico, 08/06/2015
- [Regolamento per l'Accesso aperto alla produzione scientifica di Ateneo](#) - Senato Accademico, 07/07/2017 - DR n° 2745/2017

Why a single archive?



- # to increase the visibility of research conducted at the University of Padova;
- # to increase the relevance of scientific contributions in international consideration and encourage the comparison of ideas and positions;



- # to increase efficiency in obtaining data and documents, thanks to specialized indexing;
- # to centralize document management in a single collector and thereby avoid the dispersion of resources in local repositories;



- # to guarantee the integrity of documents and their appropriate description, regardless of technological and instrumental changes;



- # to respond to funders requirements, since in many cases they expect the submission of research products to open access repositories;

Padua Research Archive, l'archivio istituzionale della produzione scientifica dell'Università degli Studi di Padova, ha lo scopo di raccogliere, documentare, conservare e pubblicare, anche ad accesso aperto, i prodotti della ricerca dell'Ateneo. Padua Research Archive utilizza la piattaforma IRIS (Institutional Research Information System) sviluppata da Cineca.



UNIVERSITÀ
DEGLI STUDI
DI PADOVA



Giugno 2015



Apertura del
Catalogo
Padua Research
Archive

Settembre 2017



Regolamento di
Ateneo per
l'Accesso Aperto



Dicembre 2018



Validazione
allegati a cura
del team di
supporto OA di
Ateneo

CRITERI DI RICERCA

per

Vai

[Inizia una nuova ricerca](#)

Aggiungere filtri:

Utilizza i filtri per perfezionare i risultati della ricerca.

Titolo



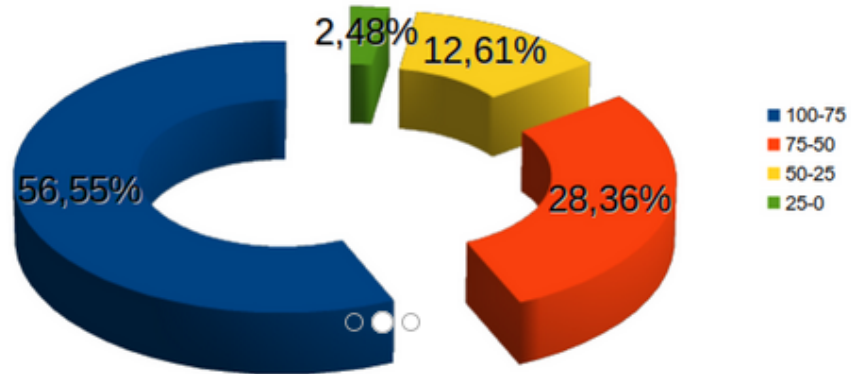
Uguale



[Aggiungi](#)

- [Padua Research Archive](#) is the institutional repository managed by the Research Area of the University of Padova.
- Its aim is to collect and publish in Open Access the **research outputs of the University of Padova**. It is based on the IRIS platform (Institutional Research Information System) developed by Cineca.
- Documents are deposited with **self-archiving procedures**.
- It is linked to [OpenAIRE](#).
- It also makes possible the interoperability and data exchanges with some databases (Scopus, etc.), and the export of records.

Pubblicazioni 2013-2017: distribuzione per fascia del miglior percentile citazionale



CURRENT SEARCH CRITERIA

for

Go

Star a new search

Add filters:

Use filters to refine the search results.

Title

Equals

Add

QUICK START GUIDE

ENTERING NEW PUBLICATION

TUTORIAL VIDEO

OPEN ACCESS DOCUMENT

ATTACHMENT GLOSSARY

DEPARTMENT CONTACTS



ORCID provides a persistent digital identifier that distinguishes you from every other researcher and, through integration in key research workflows such as manuscript and grant submission, supports automated linkages between you and your professional activities ensuring that your work is recognized.

<https://orcid.org/>

New submission: get data from bibliographic external service

Search Form

Results

DEFAULT MODE SUBMISSION

Select collections:

Select...

Manual submission

FREE SEARCH

SEARCH FOR IDENTIFIER

UPLOAD A FILE

RESEARCH PADUA ARCHIVE

Help

✓ 1 - Describe

✓ 2 - Describe

✓ 3 - Describe

✎ 4 - Upload

5 - Verify

Submit: Upload a File

Please enter the name of the file on your local hard drive corresponding to your item. If you click "Browse...", a new window will appear in which you can locate ar

Please also note that the DSpace system is able to preserve the content of certain types of files better than other types.

Document File:

Select a file...

Select a type for this file

Type

(seleziona...)

Choose access option

Access policy

Select

License

Select

Send file to LoginMIUR website, if you are loading a PDF you need to choose Yes or No.

LoginMIUR website transfer:

N/A

Please give a brief description of the contents of this file, for example "Main article", or "Experiment data readings".

Document File:

Select a file...

scopusresults.pdf



Select a type for this file

Type

Choose access option

Access policy

License

Send file to LoginMIUR website, if you are loa

LoginMIUR website transfer:

(seleziona...)

(seleziona...)

Altro materiale allegato

Documento in Pre-print

Documento in Post-print

Versione dell'Editore

Abstract

Select...

- Pre-print in PRA:

[https://www.research.unipd.it/retrieve/handle/11577/3254733/199036/Ciraulo-Sambin Embedding locales into positive topologies.pdf](https://www.research.unipd.it/retrieve/handle/11577/3254733/199036/Ciraulo-Sambin_Embedding_locales_into_positive_topologies.pdf)

- Publisher's version:

<https://link.springer.com/content/pdf/10.1007%2Fs00153-017-0605-0.pdf>

DOI: [10.1007/s00153-017-0605-0](https://doi.org/10.1007/s00153-017-0605-0)

- Post-print in PRA:

<https://www.research.unipd.it/retrieve/handle/11577/3269781/228469/BBA-Bioenergetics%202018%20-%20accepted.pdf>

- Publisher's version:

<https://reader.elsevier.com/reader/sd/pii/S000527281830080X?token=B728E1EFD3413A0F9CA7BCBDCEA2ABF98C1DF206588CCBE44877413787BB977156516E6A372BBD6F3119526F886BB286>

DOI: [10.1016/j.bbabbio.2018.04.006](https://doi.org/10.1016/j.bbabbio.2018.04.006)

- Publisher's version not allowed:

www.elsevier.com/locate/bbabio

DOI: [10.1016/j.bbabio.2018.07.001](https://doi.org/10.1016/j.bbabio.2018.07.001)

- OA publisher's version in PRA:

<https://www.research.unipd.it/retrieve/handle/11577/3262150/228334/Bisaglia38-HMG.pdf>

DOI: [10.1093/hmg/ddy069](https://doi.org/10.1093/hmg/ddy069)

<https://www.research.unipd.it/preview-item/355744?queryId=myadvsearch&>

DOI: [10.3390/w10080984](https://doi.org/10.3390/w10080984)

be

✓ 3 - Describe

4 - Upload

5 - Verify

6 - License

7 - Complete

local hard drive corresponding to your item. If you click "Browse...", a new window will appear in which you can locate and select the file on

is able to preserve the content of certain types of files better than other types.

Select a file...

(seleziona...)

Select

Select

ling a PDF you need to choose Yes or No.

N/A

of this file, for example "Main article", or "Experiment data readings".

SHERPA/ROMEO PUBLISHER POLICY DATABASE

Information from
**SHERPA
RoMEO**

All SHERPA/RoMEO information is correct to the best of our knowledge but should not be relied upon for legal advice. SHERPA cannot be held responsible for the re-use of RoMEO data, or for alternative interpretations which are derived from this information.

The SHERPA/RoMEO Database provide the following data for the journal that you have entered.

Journal: Statistica Sinica (ISSN: 1017-0405)

Publisher: Academia Sinica, Institute of Statistical Science

Author's Pre-prints: ? Archiving status unclear

Author's Post-prints: ✓ Author can archive post-print (ie final draft post-refereeing)

Publisher's Version: ✖ Subject to Restrictions below, author can archive publisher's version/PDF

General conditions:

- Publisher's version/PDF may be used 12 months after publication

Paid open access: null.

Copyright:

«Open» Access Policy > Free Access/Open Access

Select a type for this file

Type

Versione dell'Editore

Choose access option

Access policy

Select

Select

Open Access

Embargo

Granted Users

Archive admin only

License

Send file to LoginMIUR website, if you are loading

LoginMIUR website transfer:

Please give a brief description of the contents of this file, for example "Main article", or "Experiment data readings".

File Description:

«Open» Access Policy > License Free Access/Open Access

Choose access option

Access policy

Open Access

License

Select

Send file to LoginMIUR website, if you are loading

Select

LoginMIUR website transfer:

Free access

Open access

Please give a brief description of the contents of the

Public domain

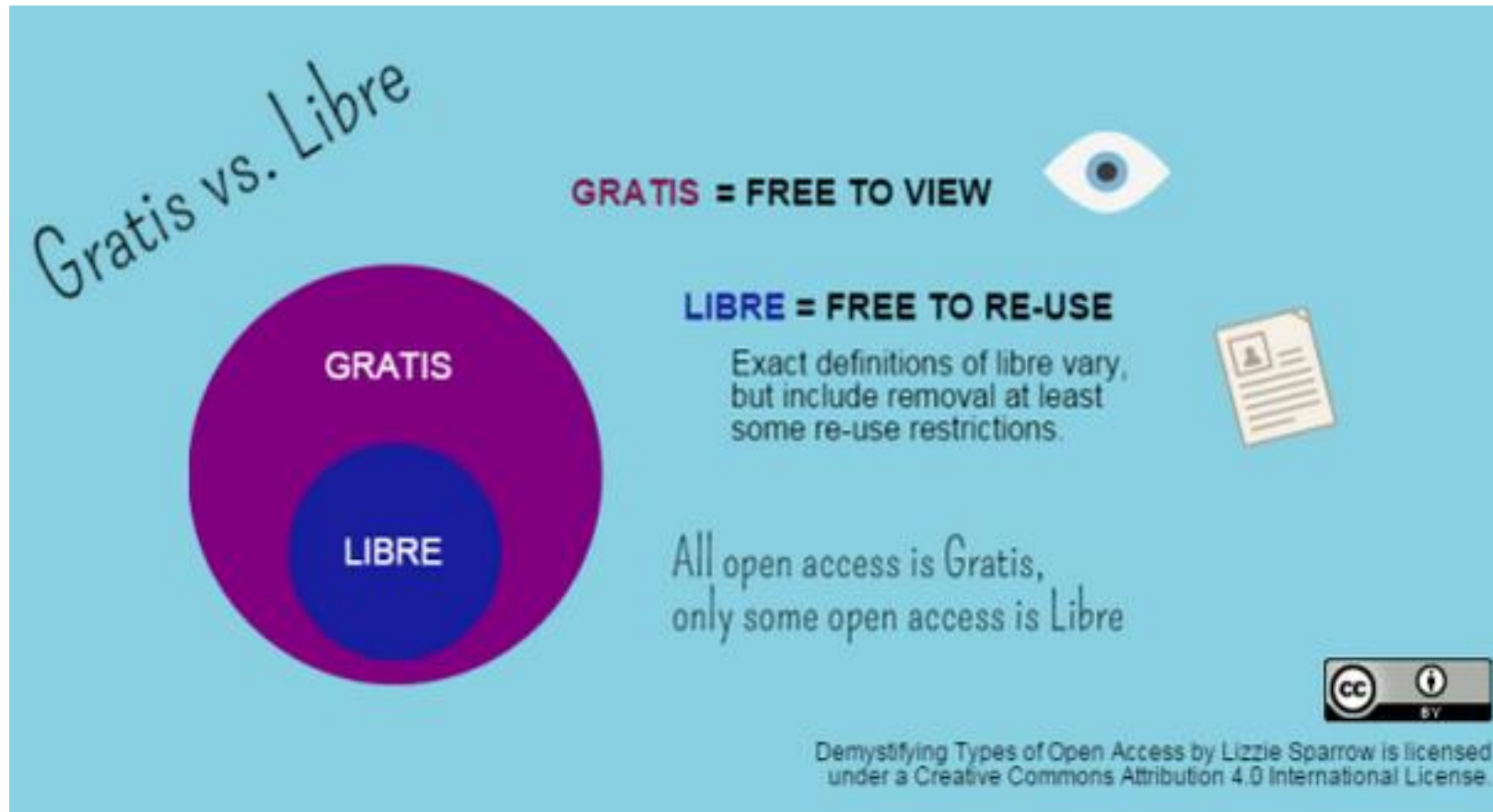
File Description:

Creative Commons

Please indicate the amount, the currency and the sources of funding (i.e.: EU, MIUR, Telethon, etc.) of the fee paid for Open Access.

Gratis vs. Libre

... where *Gratis* = *Free Access* while *Libre* = *Open Access*



«Open» Access Policy > Creative Commons

Select a file

Versione dell'Editore

Open Access

Creative Commons

g a PDF you need to choose Yes or No.

Rispondi alle seguenti domande per la licenza

Allow commercial uses of your work?

Allow modifications of your work?

Chiudi


Scegli la licenza

Choose access option

Access policy

Open Access

License

 Attribution-NonCommercial-ShareAlike 4.0 International

Access Policy > Embargo > Deadline

Choose access option

Access policy

Seleziona Embargo

Embargo

License

Send file to LoginMIUR website, if you are loading

LoginMIUR website transfer:

Please give a brief description of the contents of this file, for example "Main article", or "Experiment data readings".

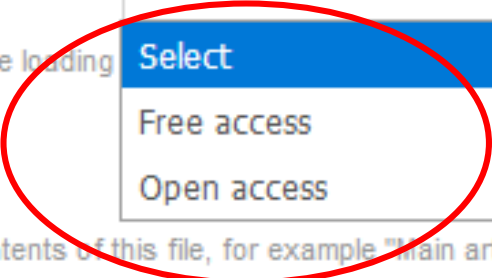
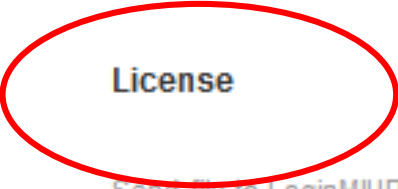


Embargo

Select

Select

Free access

Open access



Access Policy > Embargo > Deadline

Motivations to apply an embargo

(From: [Regolamento](#) per l'Accesso Aperto alla produzione scientifica dell'Università di Padova)

1. Refusal of the publisher, as explained in the Sherpa-Romeo database, or attestation made by the publisher
2. Documented refusal of one of the co-authors, if not belonging to the University
3. Reasons for public or national security
4. Reasons for privacy or presence of sensitive data
5. Protection of the University's economic rights
6. Industrial secret

Access Policy > Embargo > Deadline

SHERPA/RoMEO Home • Search • Journals •

- Publisher copyright policies & self-archiving English |

Journal found when searched for: **cristianesimo nella storia**

Journal:	Cristianesimo nella storia (ISSN: 0393-3598)
RoMEO:	This is a RoMEO yellow journal
Author's Pre-print:	✓ author can archive pre-print (ie pre-refereeing)
Author's Post-print:	✗ subject to Restrictions below , author can archive post-print (ie final draft post-refereeing)
Restrictions:	<ul style="list-style-type: none">• 18 months embargo
Publisher's Version/PDF:	✗ author cannot archive publisher's version/PDF
General Conditions:	<ul style="list-style-type: none">• On author's personal website or Institutional repository• Pre-print can only be posted prior to acceptance• Publisher copyright and source must be acknowledged• Must link to publisher version with set statement (The definitive version is available publisher's home)• Publisher's version/PDF cannot be used• Permission (not to be unreasonably withheld) needs to be sought if the author is at a different institution to when the article was originally published.

Embargo



✓ 1 - Describe

✓ 2 - Describe

✓ 3 - Describe


✎ 4 - Upload

5 - Verify

Submit: File Uploaded Successfully

Your file was successfully uploaded.

The table below shows the files which have uploaded for this item.

Primary bitstream	File	File Format
<input type="radio"/>	<p>astro_2018_en_badaloni_eng.pdf</p> <p>Logical Name: <i>None</i></p> <p>Send to LoginMIUR website: <i>No</i></p> <p>Notes: <i>Versione dell'Editore</i></p> <p>Collection:  Attribution-NonCommercial-ShareAlike 4.0 International</p> <p>Licenza</p>	<p>Adobe PDF</p> <p>5381948 bytes</p>
		<div>Remove Change</div>

Please upload the publishing contract if available.

Add Another File and/or the publishing contract

Why choosing to submit a document in Padua Research Archive (an Institutional Repository) ?

More advantages

Self-archiving makes available works to the entire international scientific community: the works are read by a wider audience, so they are quoted more than the articles in journals under subscription.

It's not necessary to pay for OA:
you can publish pre-print and post-print versions.

Keep the different versions!

version sent to the publisher without peer-review (pre-print).

accepted version without minor revisions, logos etc. (post-print).

All documents are verified and validate by Librarians!

Self-archived versions of full texts uploaded by authors are verified before publication in PRA.

Embargo check.

Who does what

Who uploads the research documents PRA?

Authors and
people charged by
departments

Whom to contact for
technical problems related to
PRA?

Settore supporto
informativo
valutazione della
ricerca e qualità -
Ufficio ricerca e
Qualità

Whom to contact for
uploading documents in open
access?

Library Helpline –
select “Supporto
Open Access
(Supporto
ricerca)”



Presentation by Michela Zorzi
for the OA Support Group of the UniPd Library System



This work is distributed under a Creative Commons Attribution-ShareAlike 4.0
International (CC BY-SA 4.0)